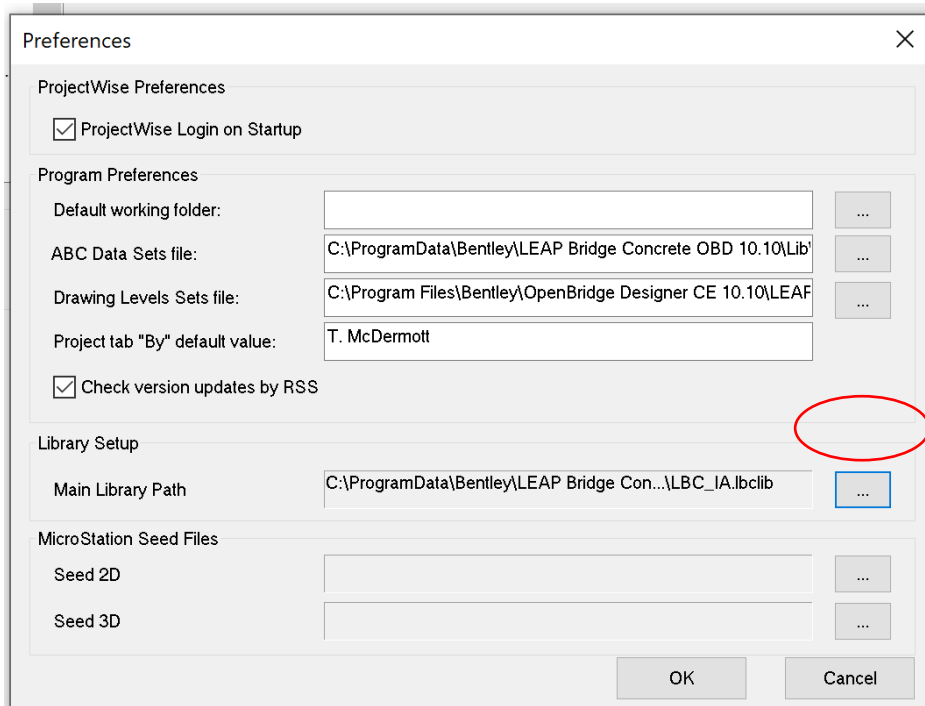


LEAP Library Configuration

1. The 4 LEAP configuration files (.LBC_IA.Ibclib, .BeamRebarPatterns.xml, .StirrupPatterns.xml, .StrandPatterns.xml) are available in the Iowa DOT ProjectWise standards at pw:\\NTPwint1.dot.int.lan:PWMain\Documents\Resources\ClientWorkspaces\IowaDOT\IowaDOTProduction\Organization-Civil\IowaDOT_Standards\Bridge Templates\ or can be downloaded from the website.
2. Export the four files from ProjectWise or download from the website and overwrite current version's of these files in the Library folder

C:\ProgramData\Bentley\LEAP Bridge Concrete OBD 10.XX\Lib\

3. Start LEAP Bridge Concrete. Click Options menu and select "Preferences"

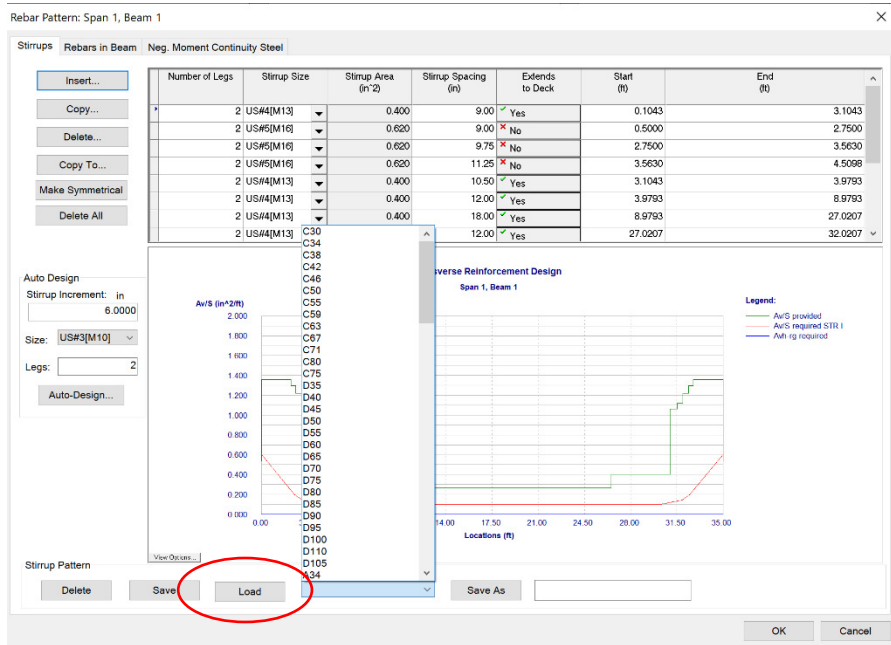


Navigate to LBC_IA.Ibclib file location on C: .

Defining Stirrups

Click “Rebar Pattern”

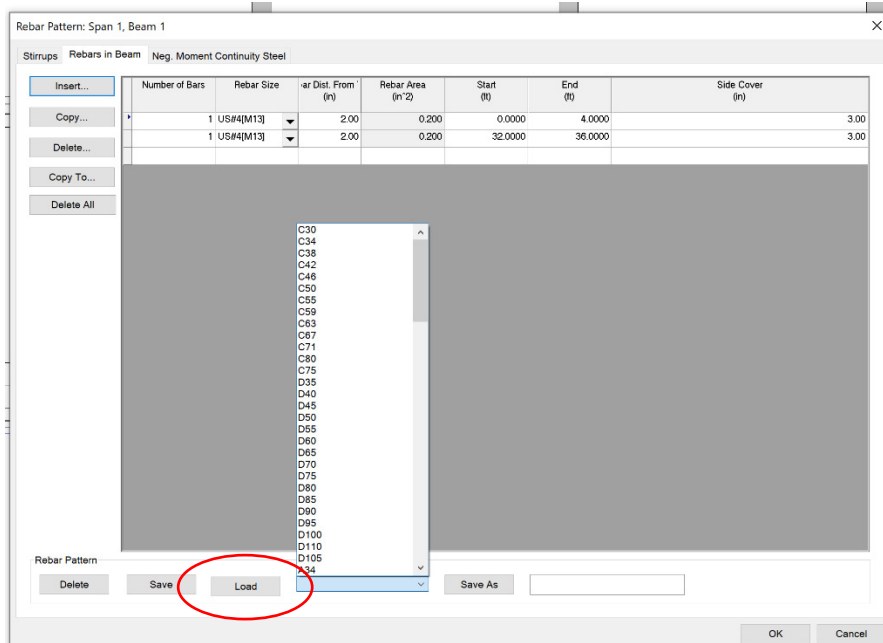
On “Stirrup” tab select the appropriate pattern from list and click “load”



Defining Rebar (top flange of beam)

Click “Rebar Pattern”

On “Rebars in Beam” tab select the appropriate pattern from list and click “load”



Defining Strands

Click "Strand Pattern"

Check box "Save/Load Strand Patterns"

Select the appropriate pattern from list and click "load"

Strand Pattern: Span 1, Beam 1, Beam ID: IA-Std-D

Type	End Template	End Height	Middle Height	# of Strands

Strand Pattern Library

Save/Load Strand Patterns

Pattern: SYMMETRICAL STRAIGHT

Initial Pull/CG Method

Kern Points (in): Lower: 13.01, Upper: 38.18, End: 0.00, Mid: 0.00, Total Strands: 0

Drapping: Increment, Decrement, Auto Design, Debond/Pull%, Reset Pattern

Strand Pattern: Span 1, Beam 1, Beam ID: IA-Std-D

Type	End Template	End Height	Middle Height	# of Strands
Straight	10	2.00	---	4
Straight	10	6.00	---	2
Straight	6	10.00	---	2
Straight	2	51.50	---	2

Strand Pattern Library

Save/Load Strand Patterns

Delete Save Load D35 Save As

Pattern: SYMMETRICAL STRAIGHT

Initial Pull/CG Method

Kern Points (in): Lower: 13.01, Upper: 38.18, End: 14.30, Mid: 14.30, Total Strands: 10

Drapping: Increment, Decrement, Auto Design, Debond/Pull%, Reset Pattern